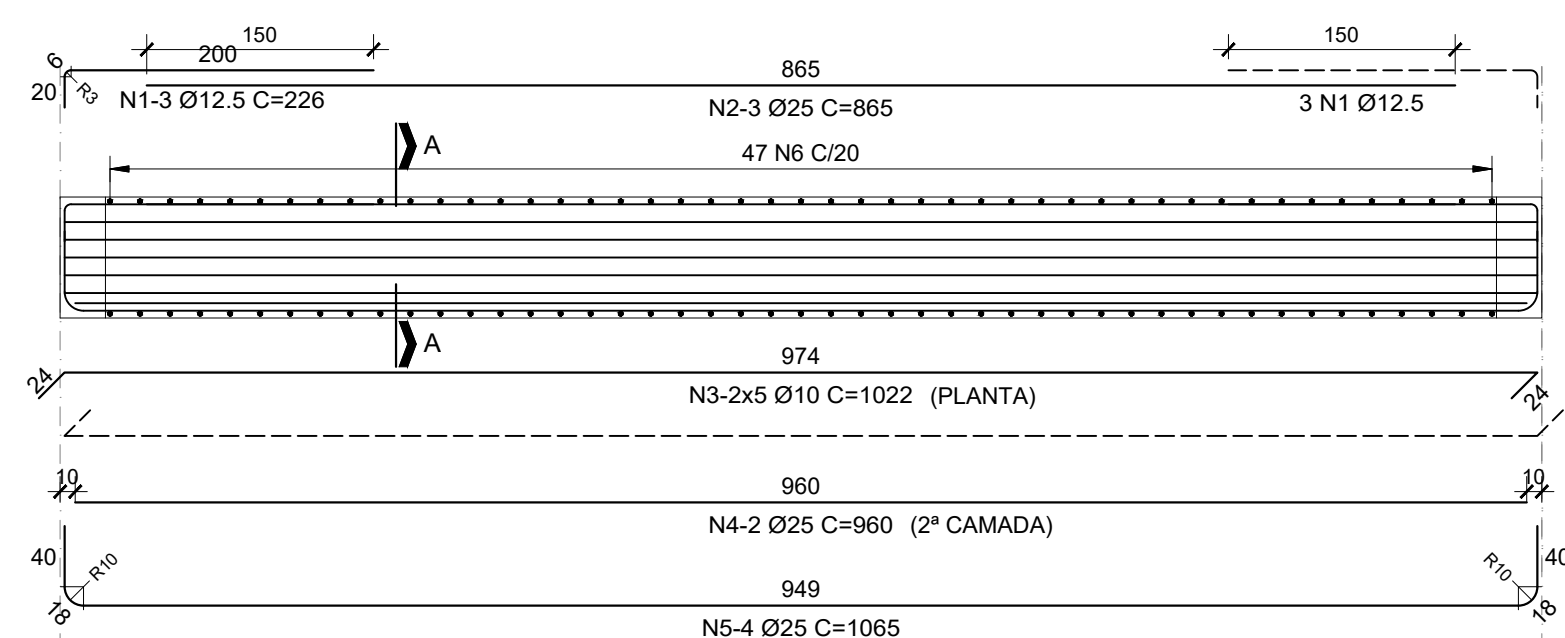
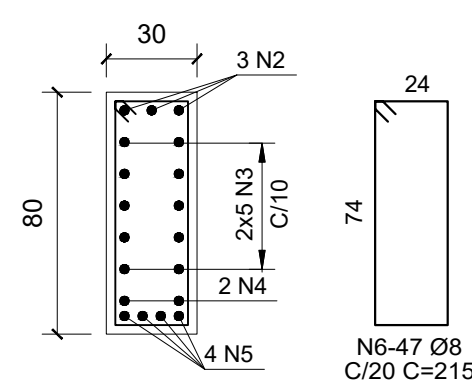


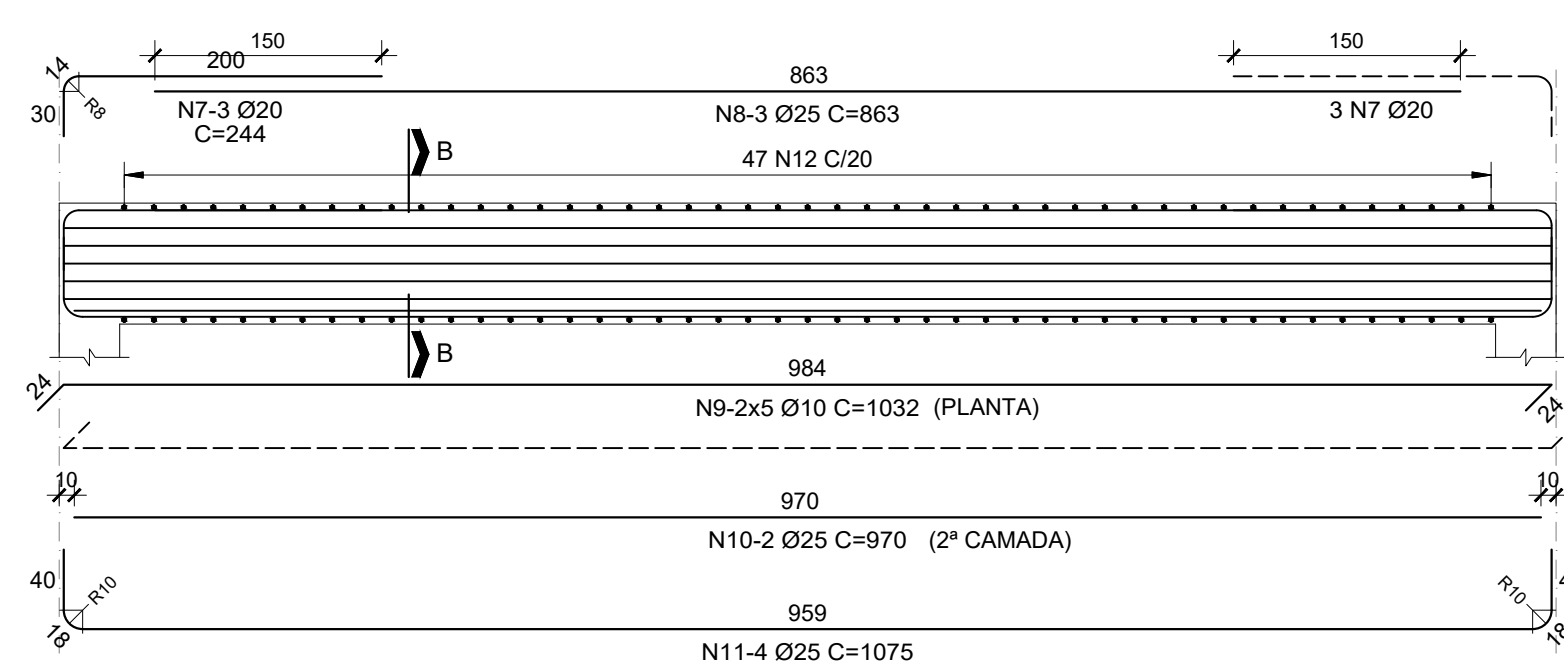
## Esc. 1:50



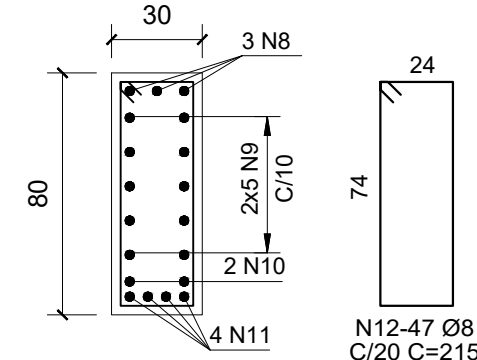
## ESC 1:25



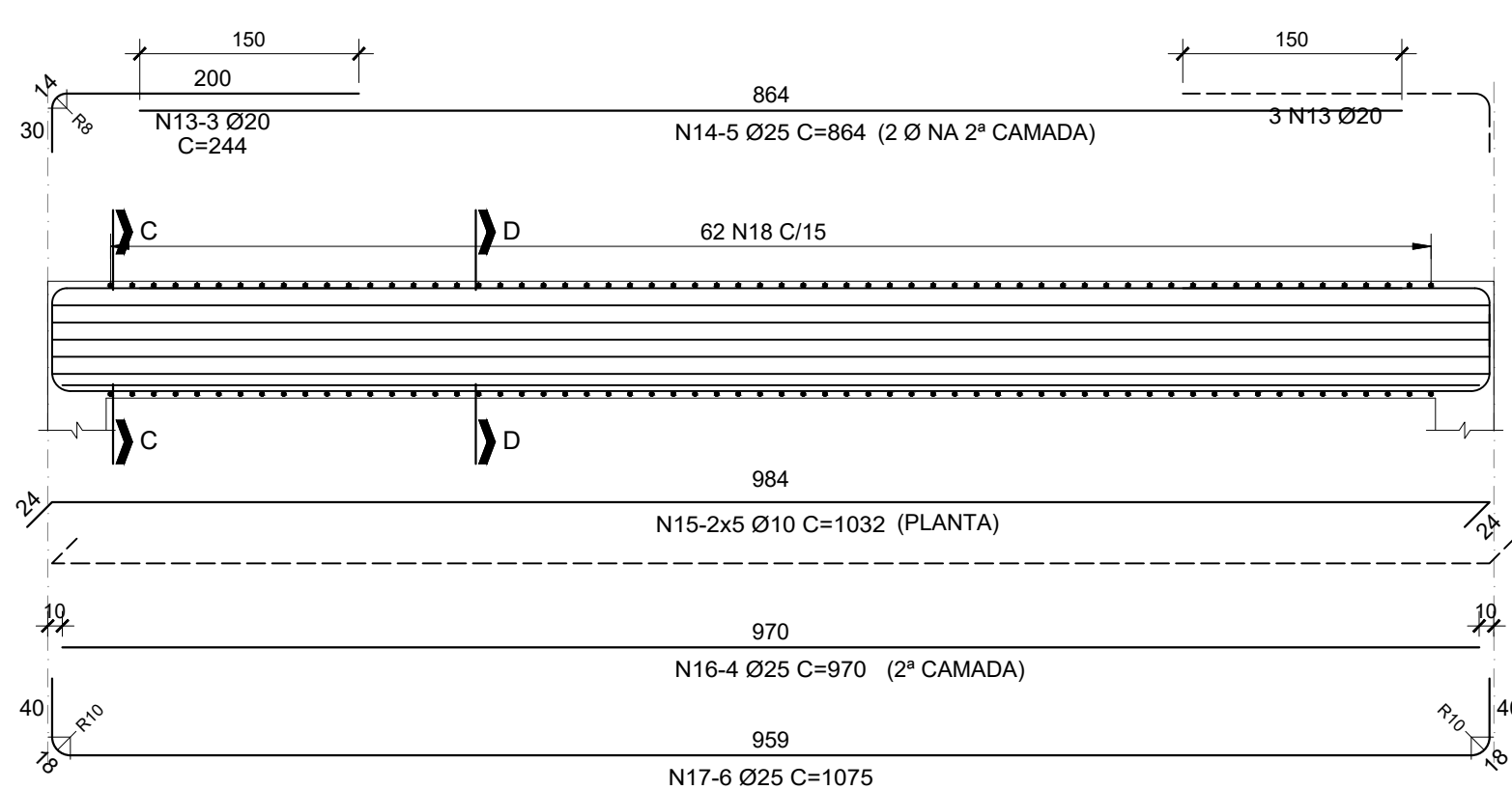
Esc 1:50



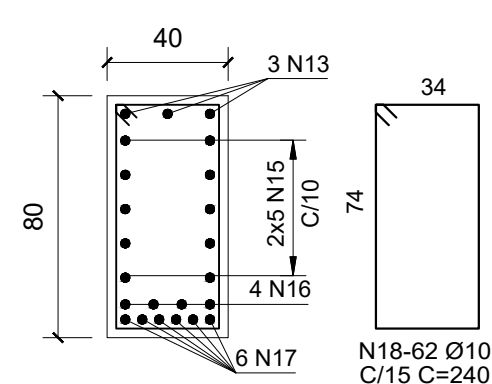
## ESC: 1:25



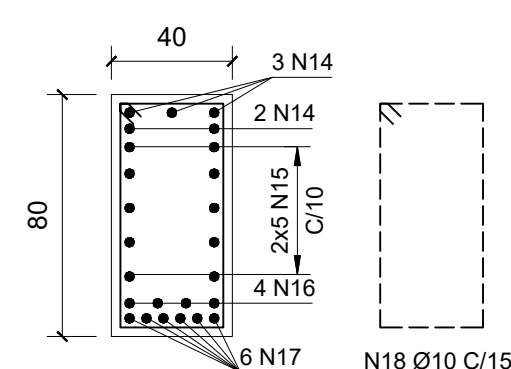
## Esc: 1:50



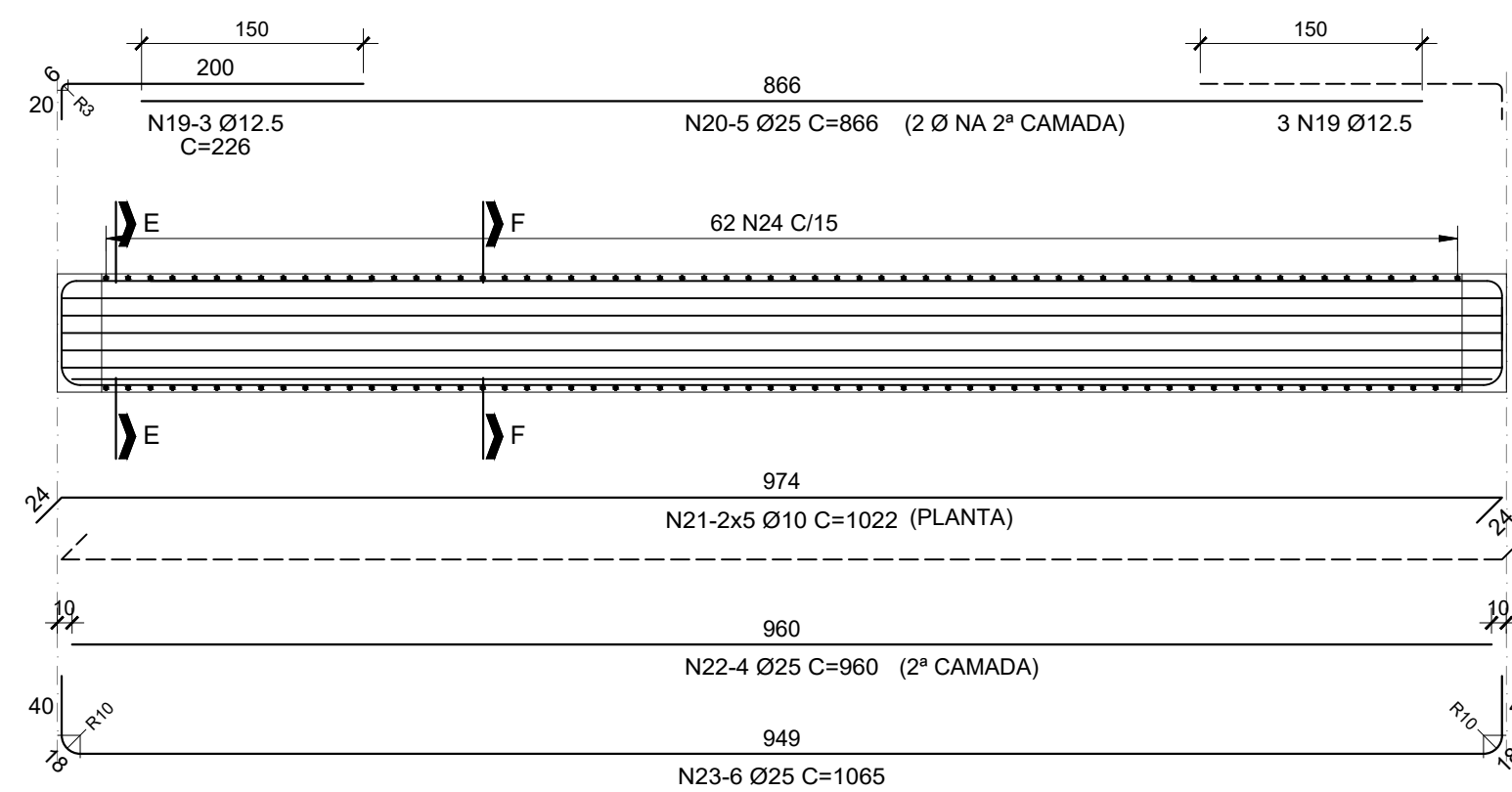
ESC 1:25



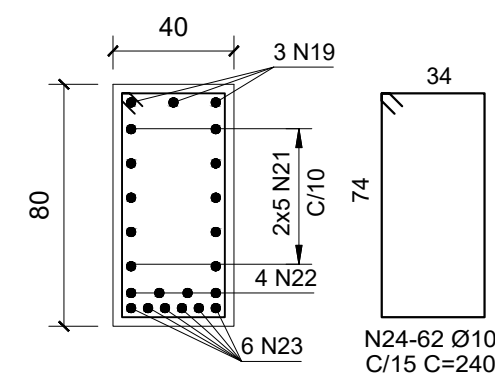
ESC 1:25



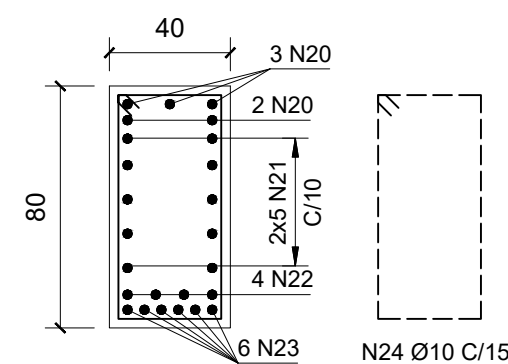
## Esc 1.50



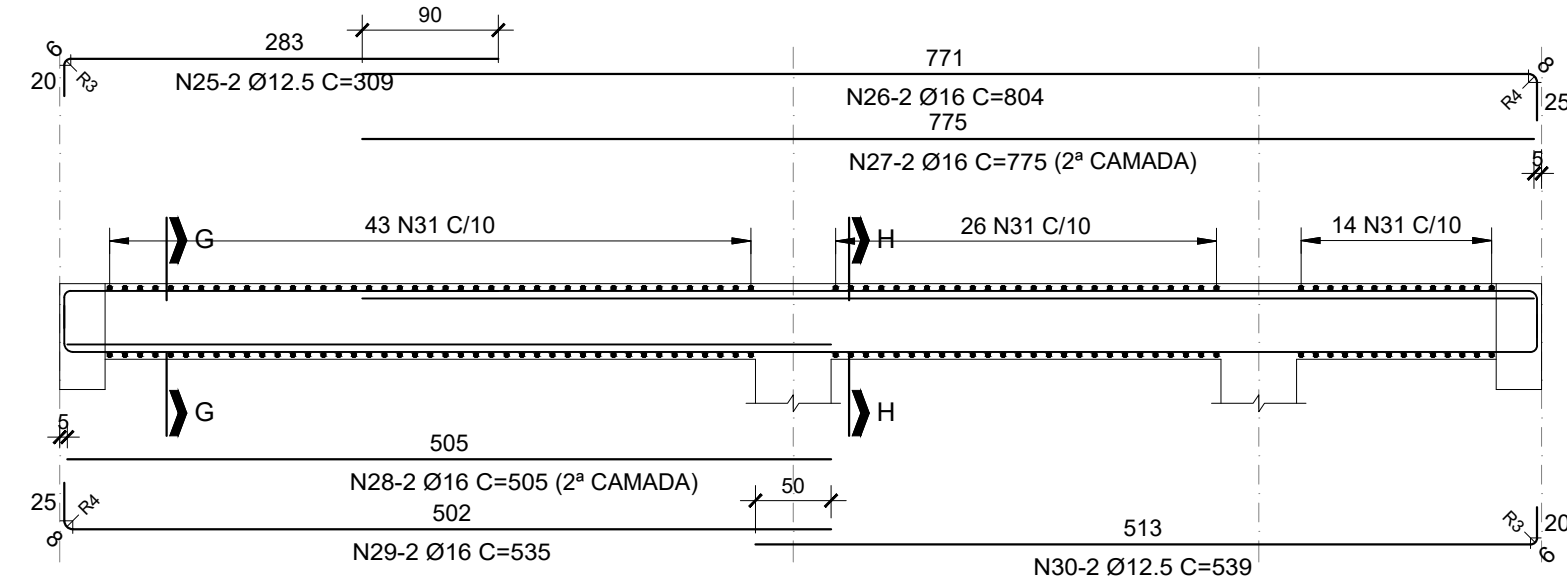
## ESC 1:25



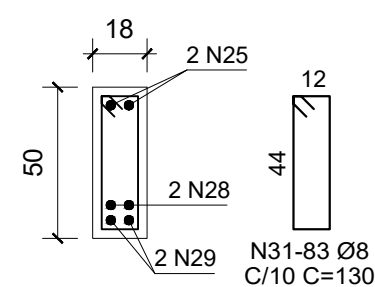
ESC 1:25



## Esc. 1:50



## FSC 1:25



## ESC: 1.25

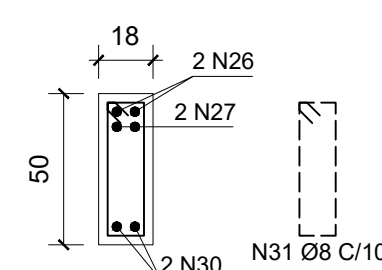


TABELA DE FERROS				
N	Ø (mm)	Q	COMPRIMENTOS	
			UNIT.(cm)	TOTAL(cm)
1	12.5	36	226	81
2	25	18	865	155
3	10	60	1022	613
4	25	12	965	115
5	25	24	1065	255
6	8	282	215	606
7	20	12	244	29
8	25	6	863	51
9	10	20	1032	206
10	25	4	970	38
11	25	8	1075	86
12	8	94	215	202
13	20	12	244	29
14	25	10	864	86
15	10	20	1032	206
16	25	8	970	77
17	25	12	1075	129
18	10	124	240	297
19	12.5	6	226	13
20	25	5	866	43
21	10	10	1022	102
22	25	4	960	38
23	25	6	1065	63
24	10	62	240	148
25	12.5	4	309	12
26	16	4	804	32
27	16	4	775	31
28	16	4	505	20
29	16	4	535	21
30	12.5	4	539	21
31	8	166	130	215

RESUMO CA-50			
Ø (mm)	kg/m	COMPR.(m)	PESO (kg)
8	0.40	1024.20	409.94
10	0.63	1574.60	995.79
12.5	1.00	128.84	128.84
16	1.60	104.76	167.82
20	2.50	58.56	146.40
25	4.00	1141.68	4566.72
TOTAL:			6495.61

**NOTAS:**

- 1 - MEDIDAS EM CENTÍMETRO, EXCETO INDICAÇÃO CONTRÁRIA
- 2- MATERIAIS:
  - CONCRETO ESTRUTURAL f<sub>ck</sub> = 30 MPa (FATOR A/C<0,5)
  - AÇO CA50
- 3 - COBRIMENTO DAS ARMADURAS:  
c = 3,0 cm
- 4 - VERIFICAR TODAS AS MEDIDAS E NÍVEIS NA OBRA.
- 5 - O CONTROLE TECNOLÓGICO PARA GARANTIA DA QUALIDADE DOS MATERIAIS E SERVIÇOS DEVERÃO SEGUIR TODAS AS RECOMENDAÇÕES CONSTANTES DAS SEGUINTE NORMAS DA ABNT: NBR12655, NBR7480, NBR 7481, NBR 7482 E NBR 7483.

[illegible]